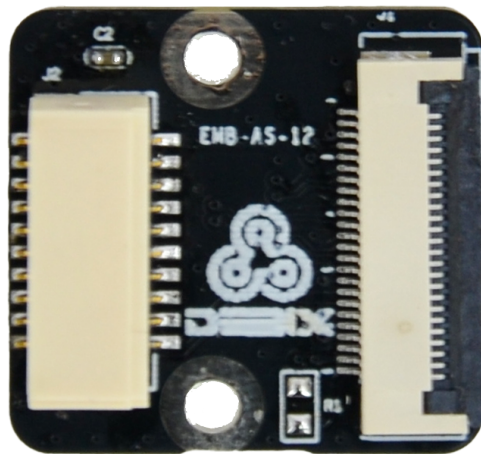


MIPI DSI Adapter Board



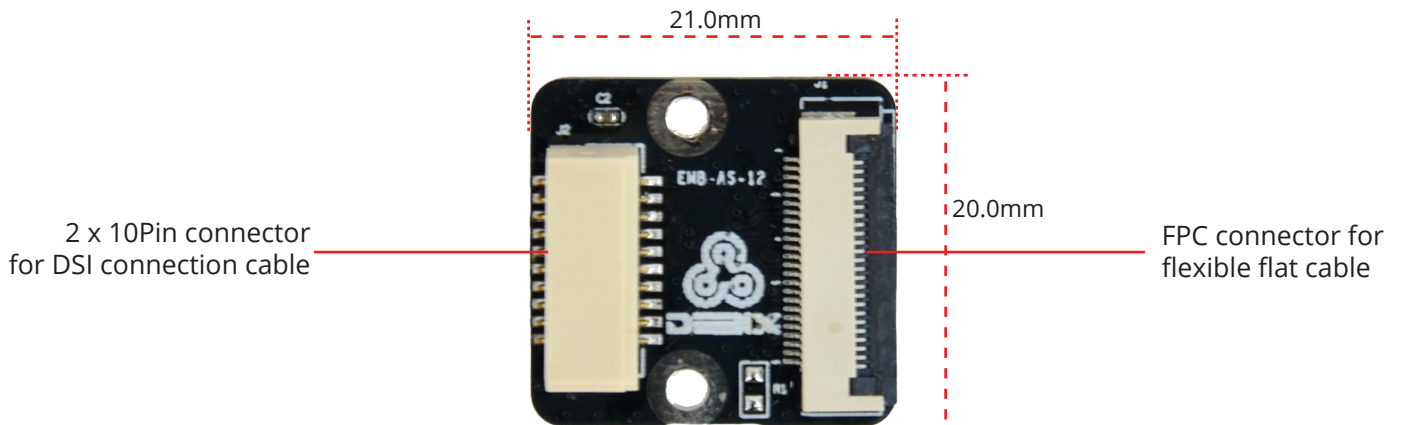
MIPI DSI Adapter Board

Overview:

MIPI DSI Adapter Board is an add-on board designed for DEBIX SOM A I/O Board to allow the connection with the DEBIX MIPI DSI display. It has a FPC connector for the flexible flat cable of the MIPI DSI display and a 2 x 10Pin connector for the DSI connection cable.

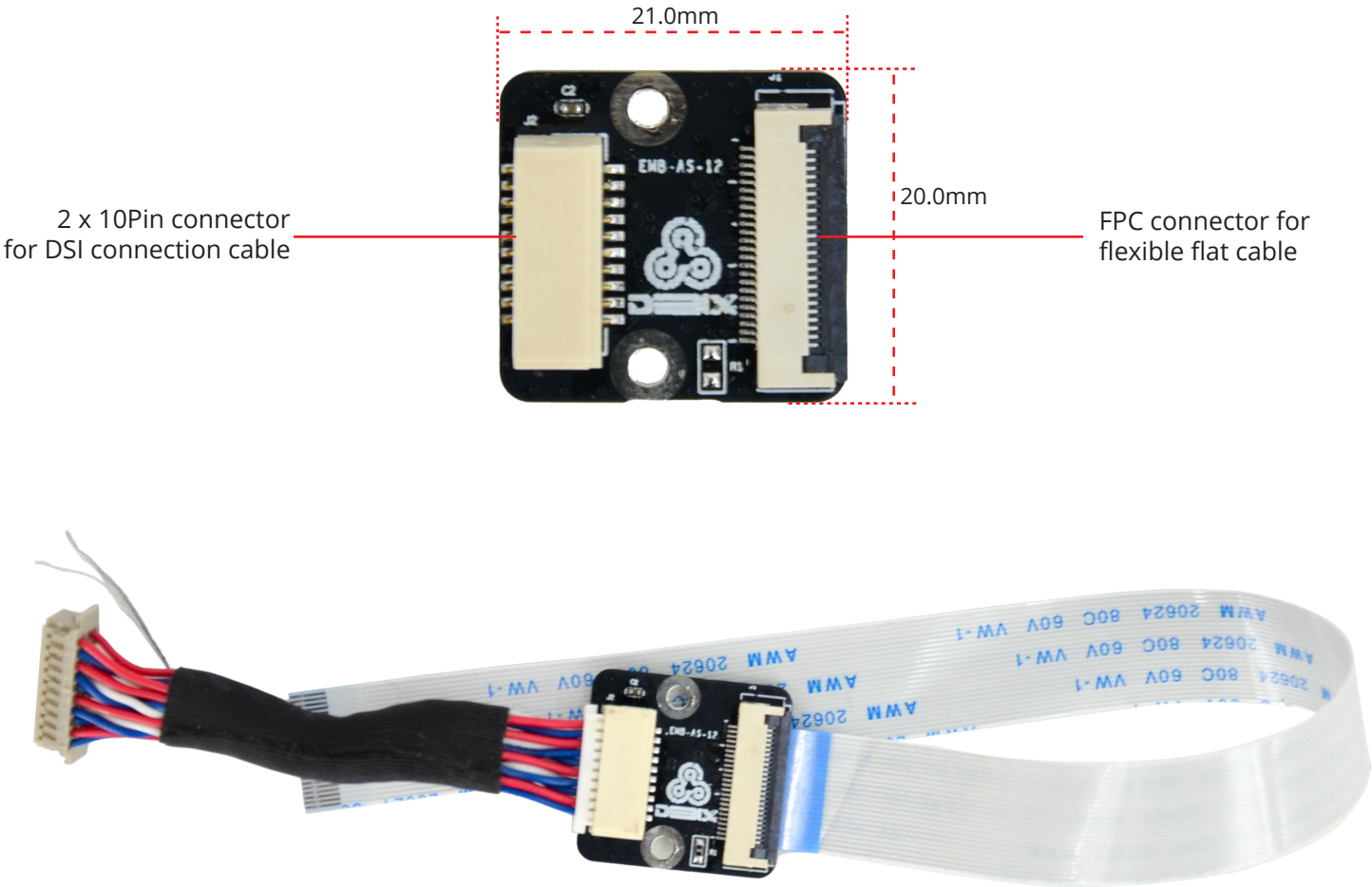
Main Features:

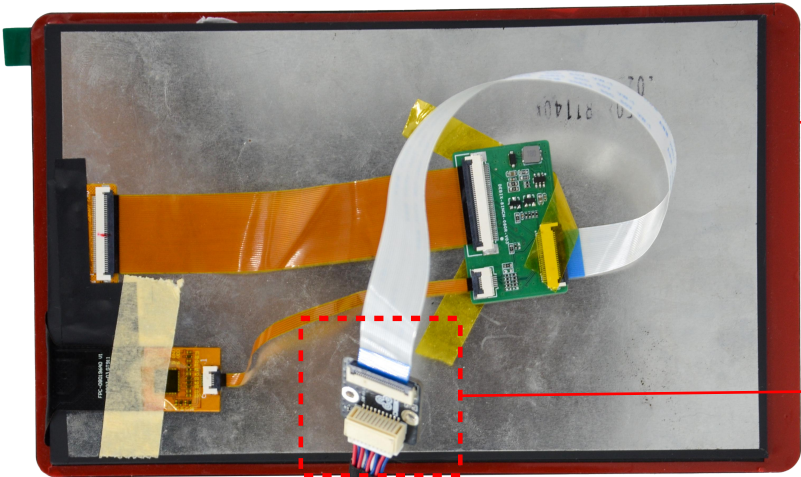
- Includes the double-row DSI connection cable
- Designed for DEBIX SOM A I/O Board
- Compatible with DEBIX 8-inch MIPI DSI display



Specification:

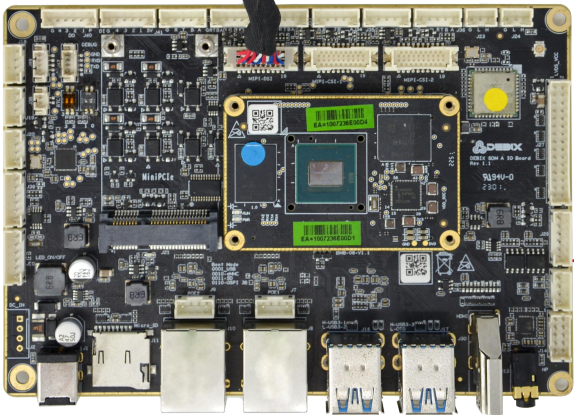
Interfaces	
Double-row Connector	1 x double-row connector for the DSI cable of the DEBIX SOM A I/O Board
FPC connector	1 x FPC connector for the FPC cable of the DEBIX 8-inch MIPI DSI display
Mechanical	
Dimension	21.0mm(L) x 20.0mm(W) (±0.5mm)



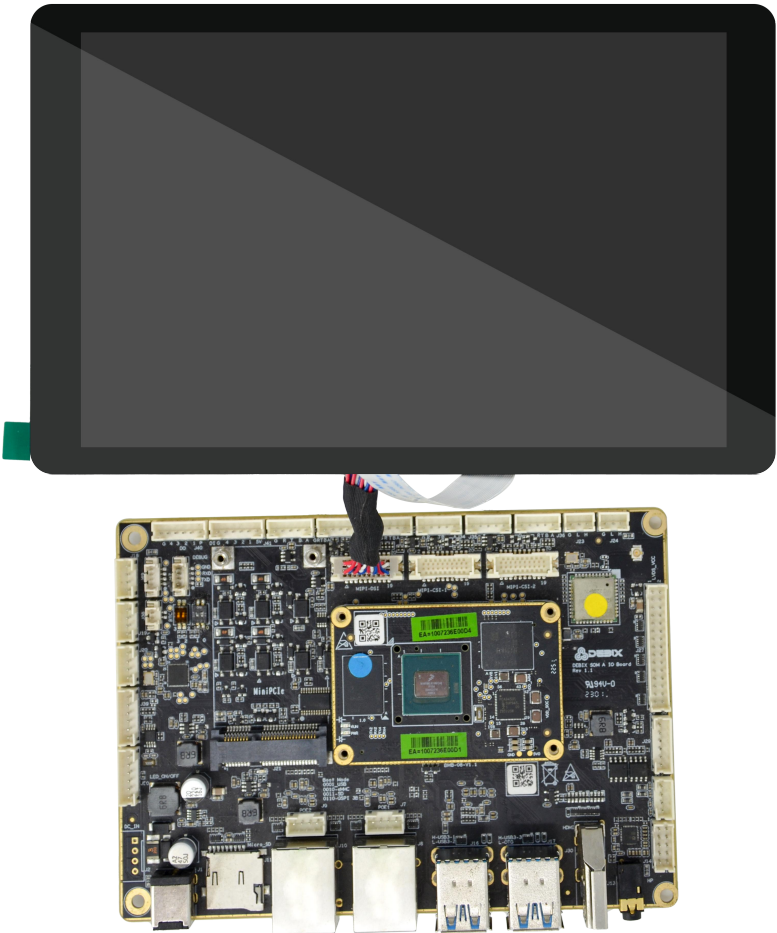


DEBIX 8in MIPI DSI Display

MIPI DSI Adapter Board



DEBIX SOM A + I/O Board



Safety Instruction and Warnings:

General:

- Avoid exposure to water, moisture, and conductive surfaces while operating.
- Handle with care to avoid mechanical or electrical damage to the circuit board and connectors.

Environment:

- Operate in a well-ventilated environment, even if using a case.
- Place on a stable, flat, non-conductive surface and avoid contact with conductive items.

Additional notes:

- This summary is not exhaustive, please refer to the full User Manual for details.
- If you are unsure about any aspect of safety or operation, consult a qualified professional.

Contact Us:

Headquarters: DEBIX Technology Inc., 8345 Gold River Ct., Las Vegas, NV 89113, USA

Factory: 5-6/F., East Zone, Shunheda A2 Building, Liuxiandong Industrial Park, Xili, Nanshan Dist., Shenzhen, China

Email: info@debix.io

Website: www.debix.io

Community: <https://discord.com/invite/adaHHaDkH2>

